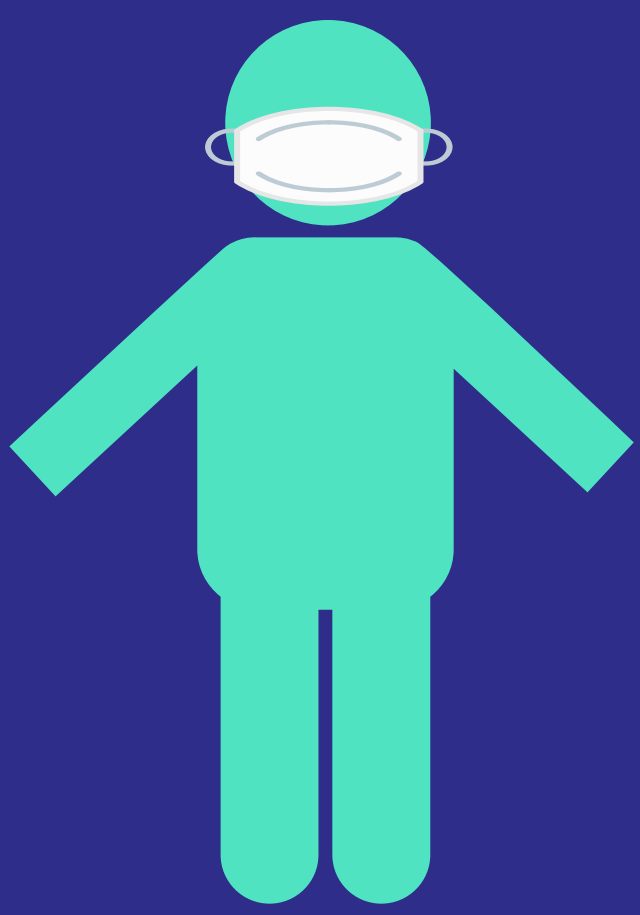


# COVID-19

## school investigations

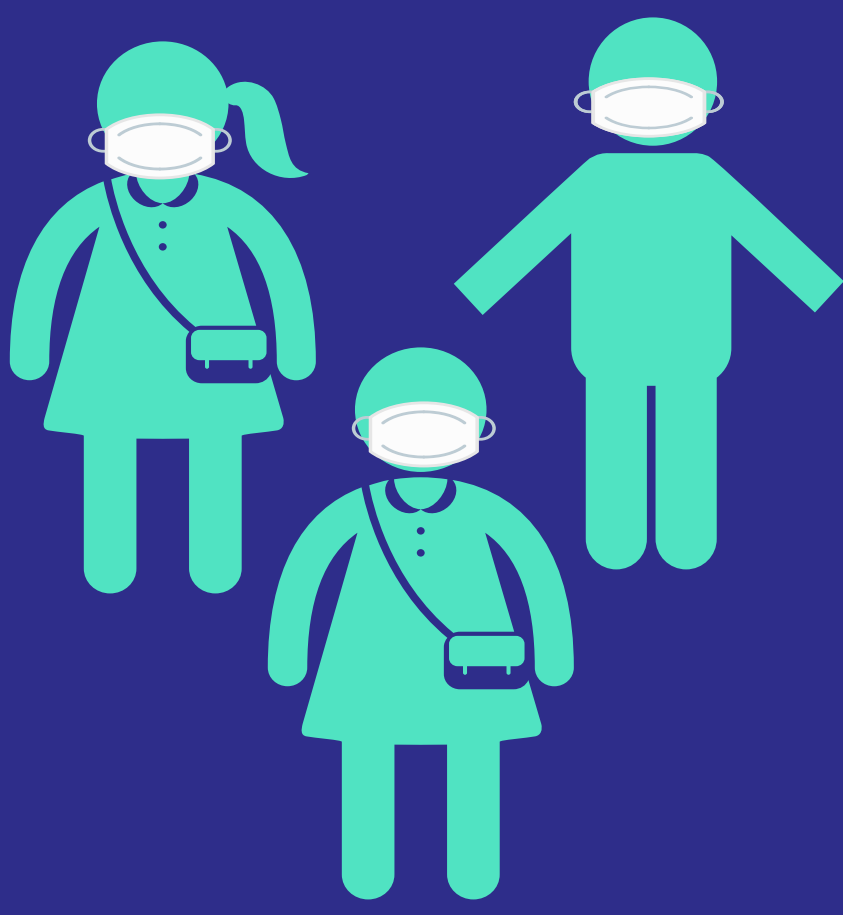
Everybody wear a mask to stay in school!

### ISOLATE



COVID POSITIVE

### SELF-MONITOR no quarantine



CLOSE CONTACTS

### Everyone Masked

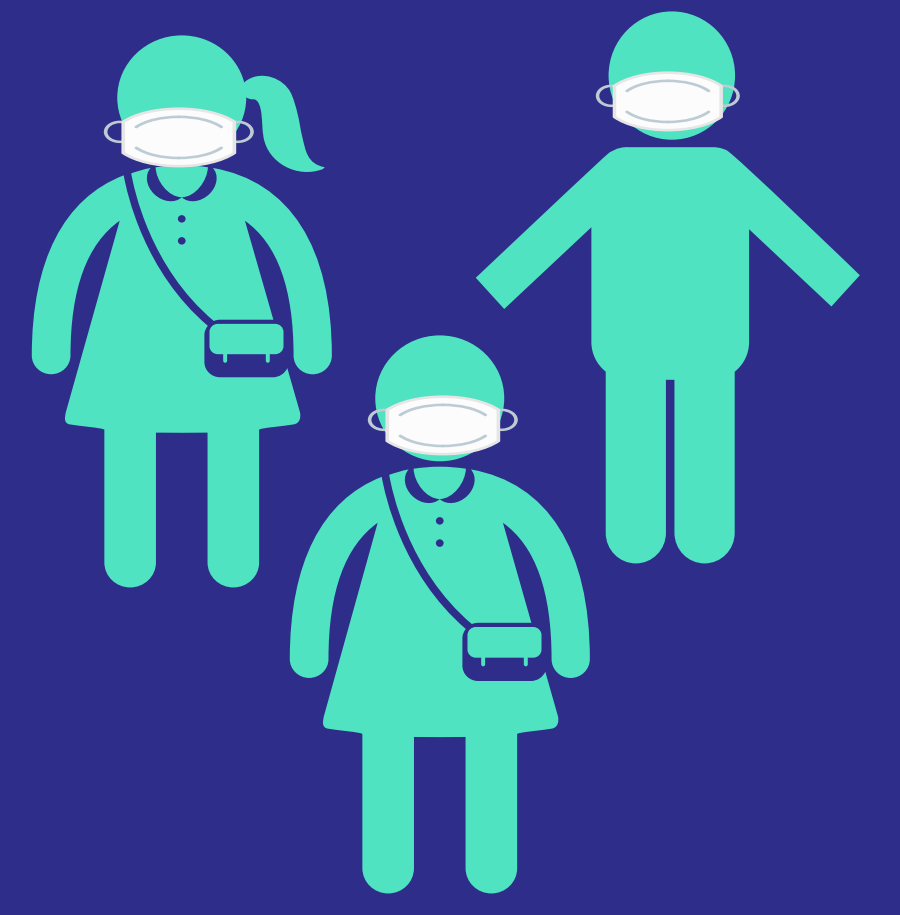
When a masked child tests positive and close contacts are wearing masks

### ISOLATE



COVID POSITIVE

### QUARANTINE



CLOSE CONTACTS

### Close Contacts Masked

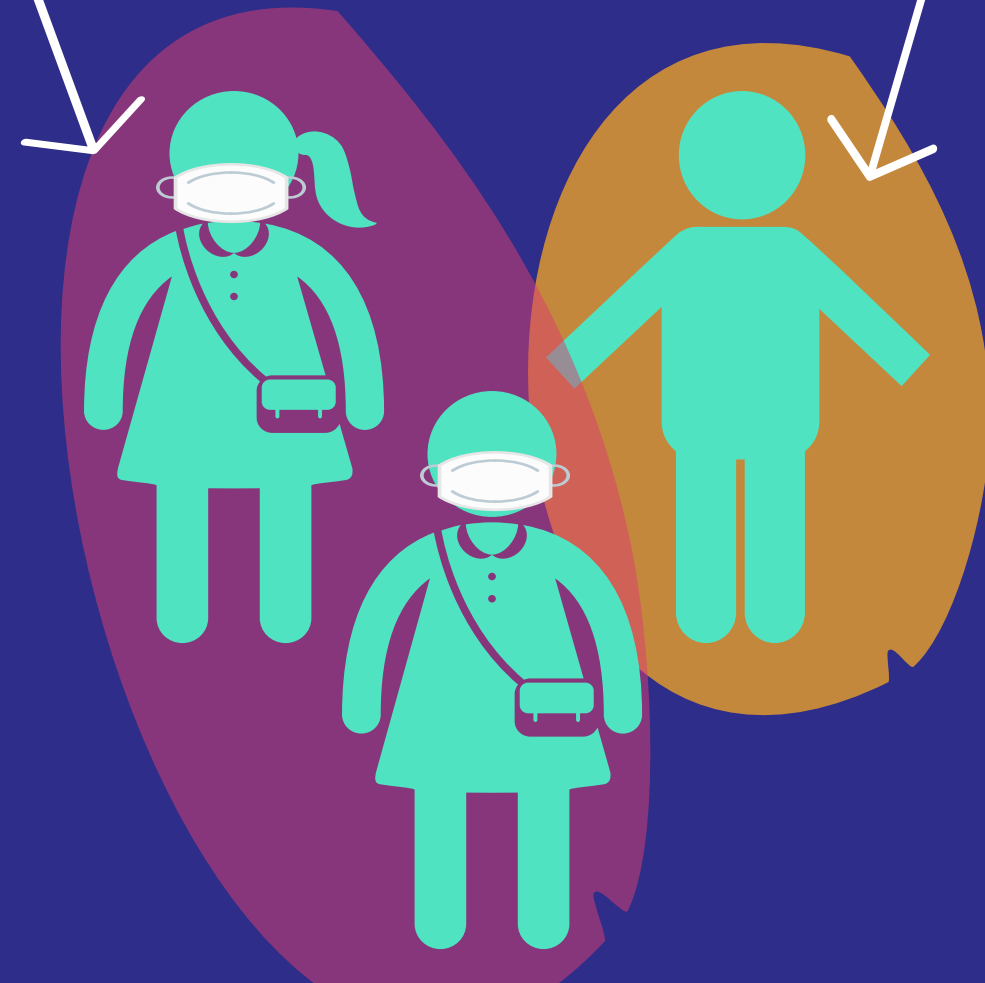
When an unmasked child tests positive and close contacts are wearing masks

### ISOLATE



COVID POSITIVE

### SELF-MONITOR no quarantine



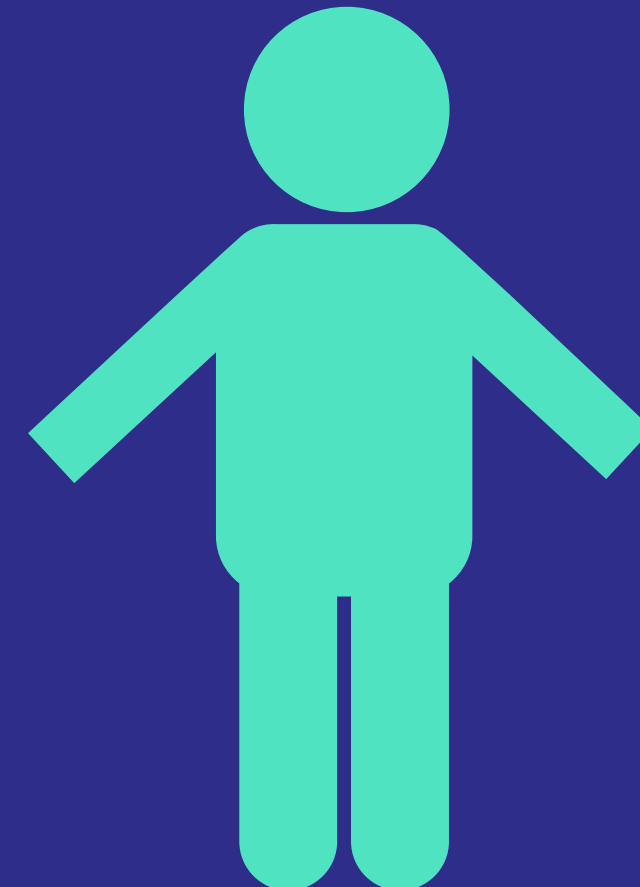
CLOSE CONTACTS

### QUARANTINE

### Close Contacts Unmasked

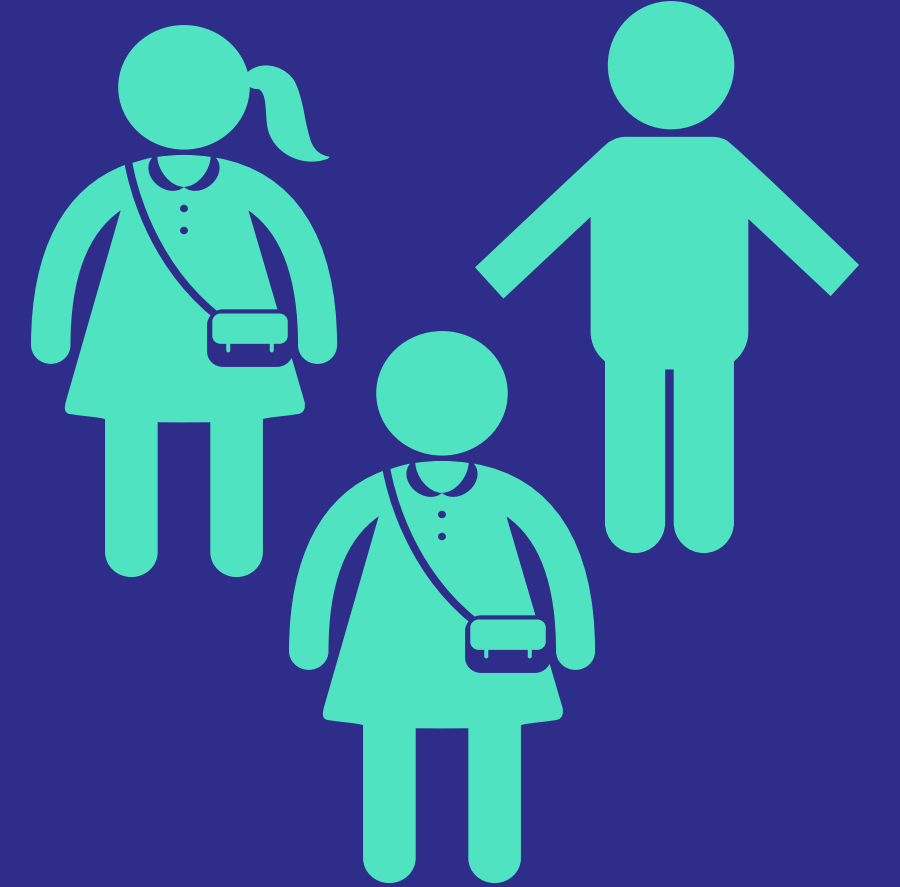
When a masked child tests positive and those exposed are not wearing masks

### ISOLATE



COVID POSITIVE

### QUARANTINE



CLOSE CONTACTS

### No One Masked

When an unmasked child tests positive and close contacts are not wearing masks

## WITH NO DOCUMENTED TRANSMISSION IN A CLASSROOM SETTING

Guidance for masks/face coverings including cloth.

Close contact = a person within 6 feet of someone who has COVID-19 for a total of 15 minutes or more